



71 Bonchurch Road , Southsea, PO4 8RY

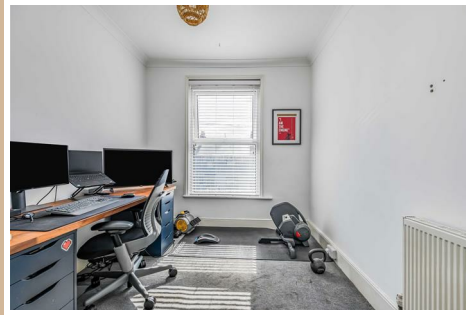
Offers in excess of £340,000



71 Bonchurch Road

, Southsea, PO4 8RY

Offers in excess of £340,000



Welcome to Bonchurch Road...

We are delighted to bring to market this impressive, four bedroom family home situated in the heart of Milton. Boasting open plan living, two bathrooms, a modern kitchen with Bi-fold doors, this charming family home offers a wonderful blend of period character and modern living.

As you enter the property, you are greeted by a welcoming hallway, which leads you to the lounge on the left. The open plan sitting room, seamlessly connects the dining and lounge space. There is ample room for a family dining table, multiple sofas and other furnishings, complete with a bay window allowing natural light to fill the room, fitted shelving and a working fireplace for those cosy evenings.

Through to the kitchen, which is modern and complete with bi-folds leading out to the garden. It is well equipped with a range of wall and floor mounted units, an integrated oven with hob and extractor, plumbing for washing facilities and space for a large fridge / freezer.

There is useful under stairs storage.

Upstairs, the first floor you'll find two generously sized double bedrooms along with a comfortable single bedroom, ideal for a nursery or home office. The stylish family bathroom is also located on this level, featuring a modern suite with a bath and overhead shower, WC, sink with storage cupboard.

The second floor hosts the standout feature of this home – a large master bedroom suite created through a quality loft conversion. With ample floor space, Velux windows, and a smartly finished en-suite shower room.

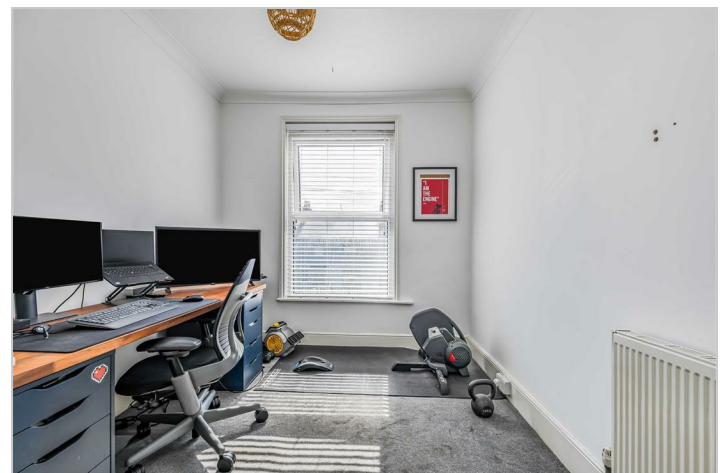
Outside, the property continues to impress, with a beautiful garden, complete with mature shrubs, a shed, and a patio area excellent for garden furniture.

Additional benefits of the property are gas central heating and double glazing throughout.

Situated in Milton, you are close to many local amenities including shops and cafes. Bonchurch Road is a short walk away from Milton Common as well as Southsea seafront. This is a well suited family home with a range of good schools all close proximity.

A viewing is highly advised to appreciate what this property has to offer. Please contact the office to arrange your appointment.

- EXCELLENT FAMILY HOME
- FOUR BEDROOM TERRACED HOUSE
- TWO BATHROOMS
- OPEN PLAN LIVING
- MODERN KITCHEN WITH BI-FOLDS
- CLOSE TO LOCAL AMENITIES



Road Map



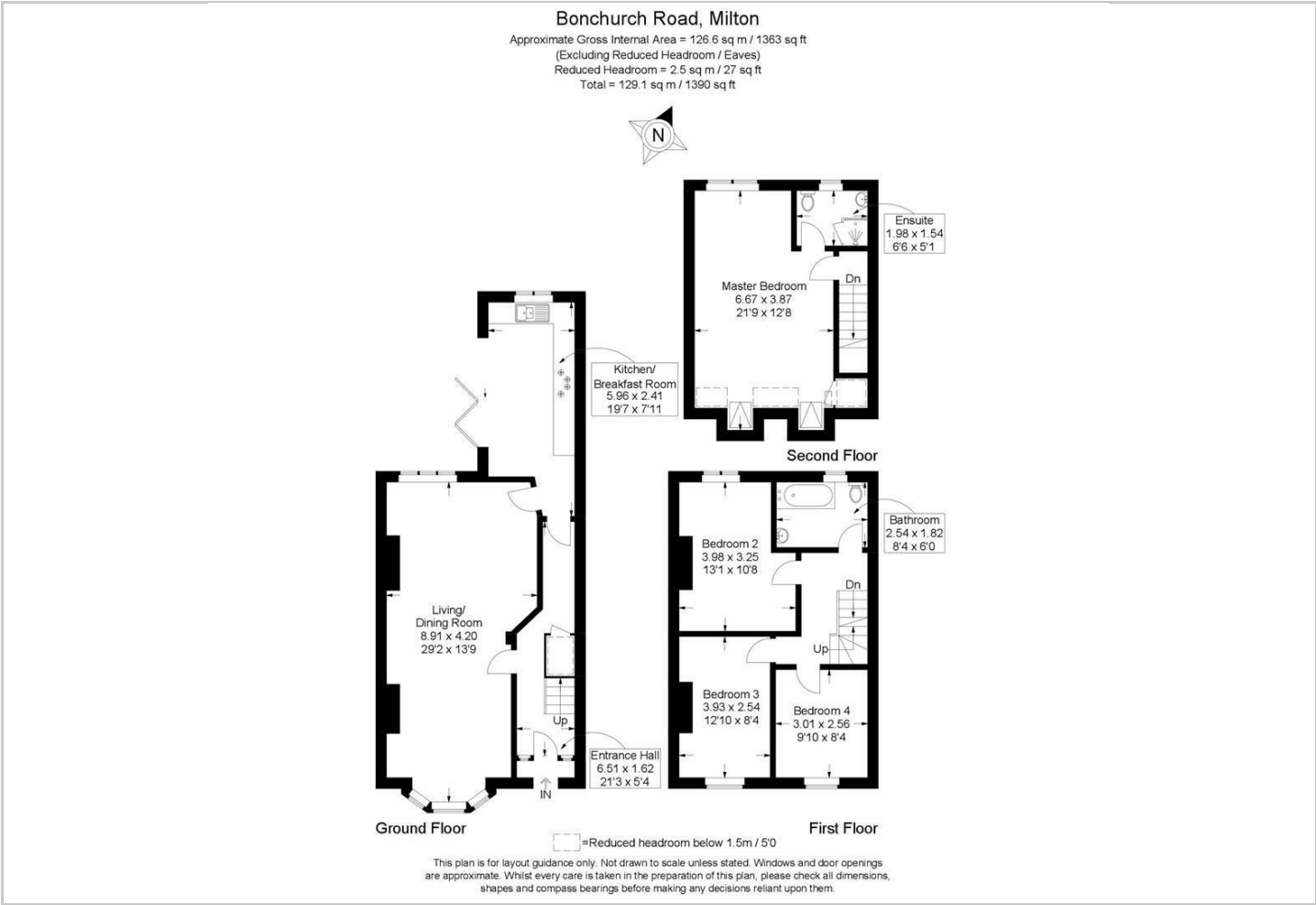
Hybrid Map



Terrain Map



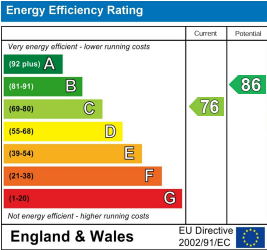
Floor Plan



Viewing

Please contact our Central Office on 02394 217317 if you wish to arrange a viewing appointment for this property or require further information.

Energy Efficiency Graph



These particulars, whilst believed to be accurate are set out as a general outline only for guidance and do not constitute any part of an offer or contract. Intending purchasers should not rely on them as statements of representation of fact, but must satisfy themselves by inspection or otherwise as to their accuracy. No person in this firms employment has the authority to make or give any representation or warranty in respect of the property.